

Our ref: Connect2 Whitstable 01



The Owner/Occupier

**Public Consultation**  
Crab & Winkle Line  
Cycle & Pedestrian Bridges

Kent Highway Services  
Ashford Highway Depot  
Henwood Industrial Estate  
Javelin Way  
Ashford  
Kent TN24 8AD

[td.canterbury.thanet@kent.gov.uk](mailto:td.canterbury.thanet@kent.gov.uk)

[www.kent.gov.uk](http://www.kent.gov.uk)

3 March 2010

Dear Sir/Madam

**Connect2 Whitstable - Public Consultation**  
**Cycle & Pedestrian Bridges Over Old Bridge Road and Teynham Road**

As I'm sure you are aware, the County Council has been working with Sustrans, Canterbury City Council and the Crab & Winkle Line Trust to create a high quality cycle & pedestrian route between the existing Crab & Winkle Way at All Saints Close and the seafront. The proposed path on the old railway line has recently received planning permission (ref. CA/07/01442).

Planning permission was granted for two bridges over Old Bridge Road and Teynham Road in June 2006 (ref CA/06/00538), but this has now expired. At this time Canterbury City Council considered that the construction of these bridges was acceptable in principle, in planning terms. Following detailed surveys and discussions with key stakeholders, the bridge designs have also changed since the 2006 application and will require the submission of a new planning application.

The bridges will include an upstand on the parapet to ensure that the crossing is also 'wildlife friendly' as the new bridge will reconnect the wildlife corridor along the former railway.

The purpose of this consultation is to seek your views on the designs prior to applying for planning permission. Images of the two bridges are enclosed, along with a feedback form. Also attached for your interest is an image of the former rail bridge.

Continued overleaf/....

More images and information will be displayed at the **Public Exhibition** to be held at the Horsebridge Centre in Horsebridge Road

Friday 12 March 2010	12.00 pm to 5.00 pm
Saturday 13 March 2010	9.00 am to 1.00 pm

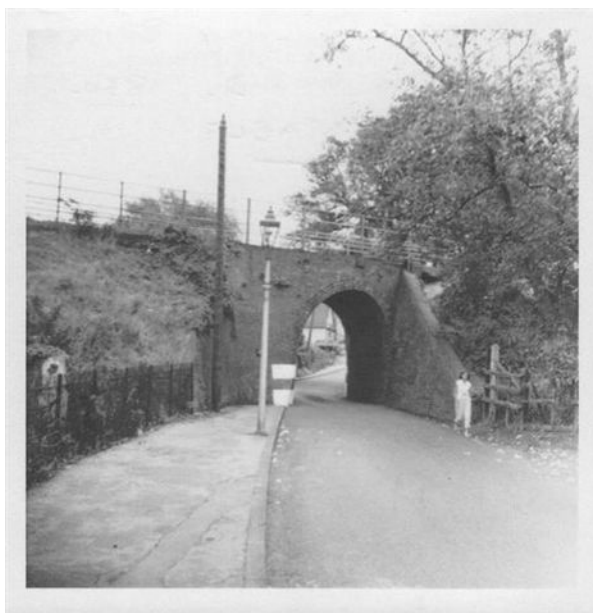
where members of the Connect2 Whitstable Steering Group will be available.

There will also be a display of the images and design drawings at Whitstable Library from the afternoon of Monday 15 March 2010 until the closing date for responses. Feedback forms will be available at the library.

**The deadline for completed feedback forms is Friday 26 March 2010.**

Yours faithfully

Ruth Goudie  
Kent Highway Services



**The original railway bridge over Old Bridge Road**

# Crab and Winkle Line Cycle and Pedestrian Bridges

To cross Old Bridge Road, the railway line and Teynham Road

## FEEDBACK FORM

1. Do you support the idea of two new bridges at this location?

- Yes  No  Don't know

2. What type of bridges do you prefer?

- Plain design  With artwork  No preference

3. Do you have any suggestions on the type of artwork you would like to see?

4. Would you, or members of your household use the bridges? (Please select all that apply)

- Yes, as a pedestrian  Yes, as a cyclist  I'm unlikely to use them

5. If you would use the bridges, how often would you use them? (Please select one option)

- Daily  Most days  About once a week  Less than once a week

6. What is your home postcode?

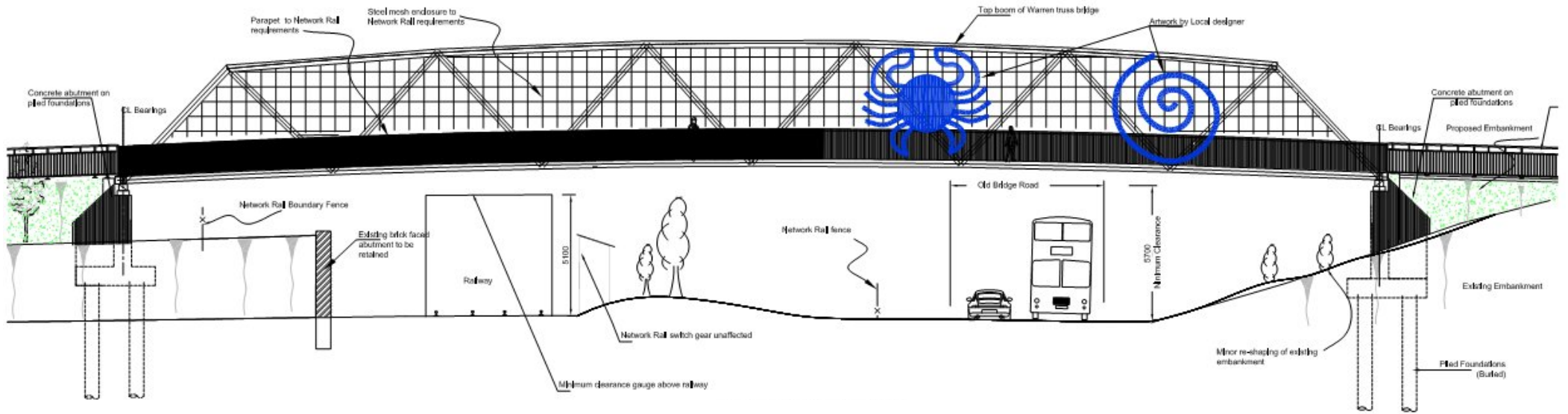
7. Any other comments?

Please attach further sheets if necessary or write on the reverse of this feedback form

Please return completed forms by **Friday 26 March 2010** to:

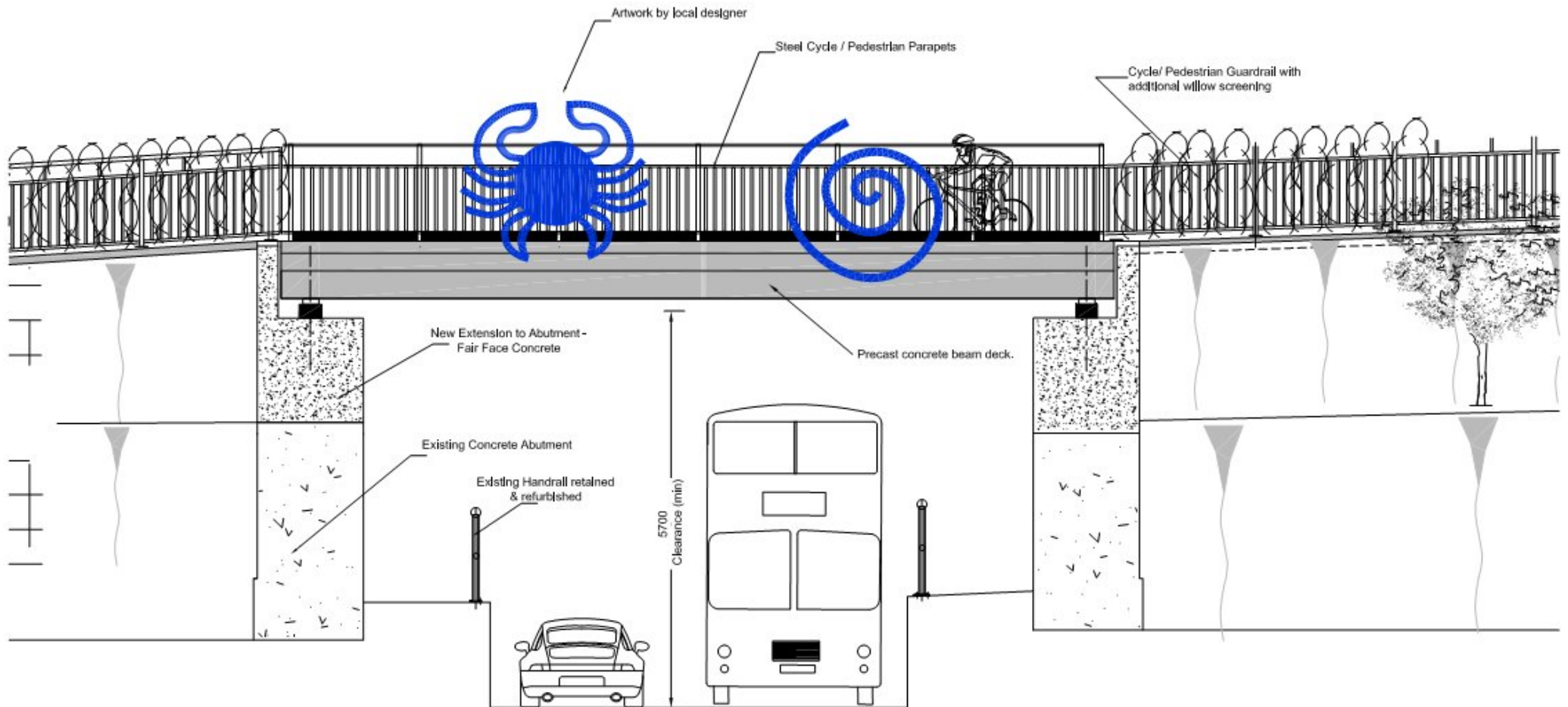
Kent Highway Services, Ashford Highway Depot, Henwood Industrial Estate, Javelin Way,  
Ashford, Kent TN24 8AD Email: [td.canterbury.thanet@kent.gov.uk](mailto:td.canterbury.thanet@kent.gov.uk)





## PROPOSED ELEVATION OLD BRIDGE ROAD

Extracted from drawing no. B1070700/G/201  
 Prepared by Jacobs for Kent Highway Services



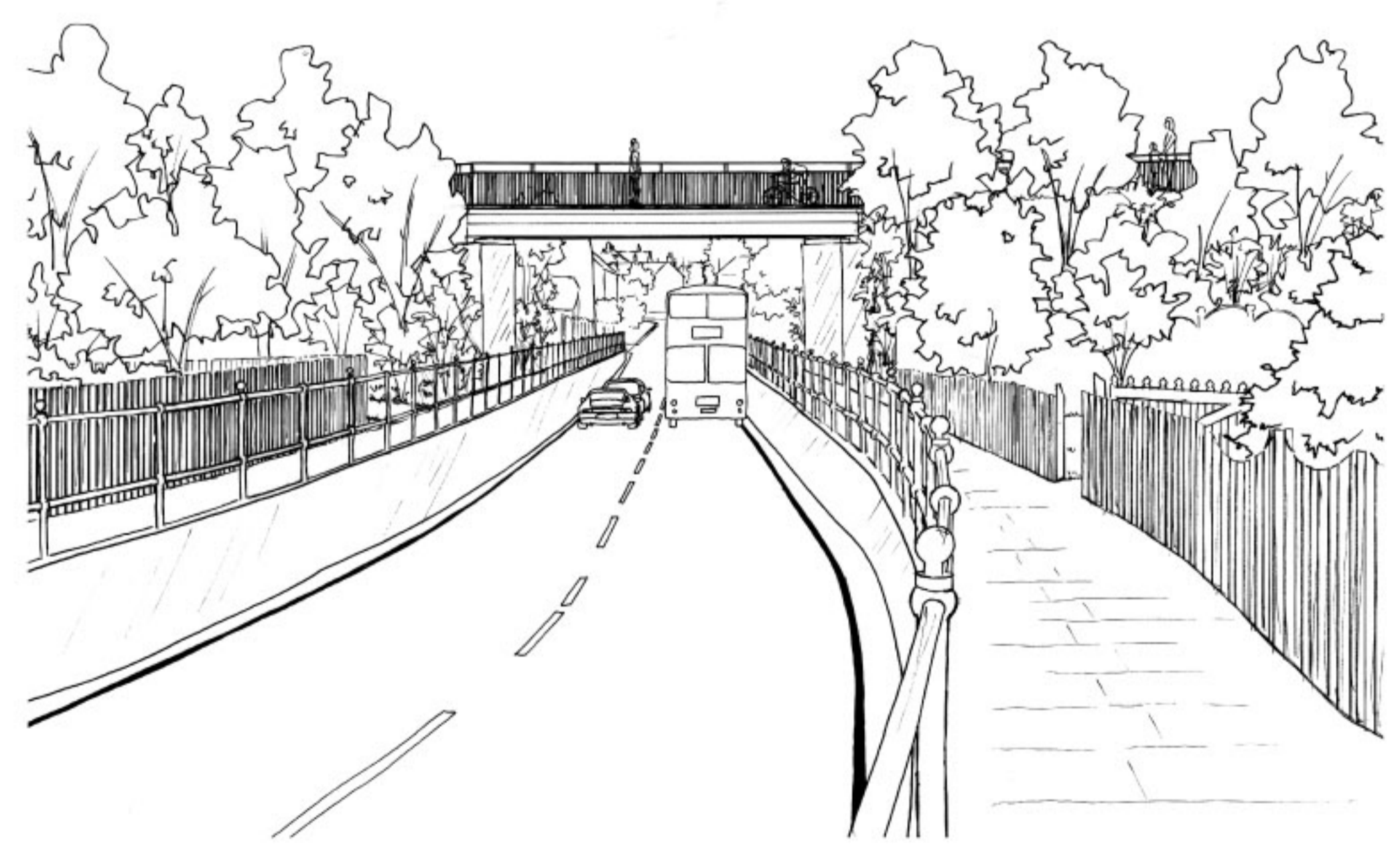
## PROPOSED ELEVATION TEYNHAM ROAD

Extracted from drawing no. B1070700/G/102

Prepared by Jacobs for Kent Highway Services



Proposed view looking west along The Bridge Approach (towards Whitstable Railway Station)



Proposed view looking east along Teyhnam Road (towards Castle Road)